

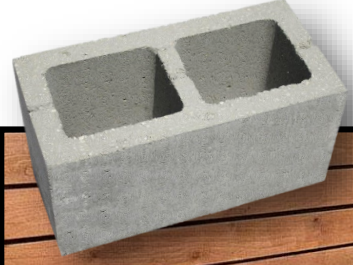


HARRINGTON & COMPANY

Block Company

Richfield

Block Catalog



SALT LAKE · 760 West Layton Avenue · Salt Lake City, UT 84104 · P: 801-972-3131 · F: 801-972-0663

HYRUM · 52 East Main · Hyrum, UT 84319 · P: 435-245-4554 · F: 435-245-7746

IDAHO FALLS · 5578 Yellowstone HWY · Idaho Falls, ID 83401 · P: 208-552-6622 · F: 208-552-1667

POCATELLO · 2929 Pole Line Road · Pocatello, ID 83201 · P: 208-775-7775 · F: 208-775-7770

RICHFIELD · 1595 South Airport Road · Richfield, UT 84701 · P: 435-896-4071 · F: 435-896-4073

ROCK SPRINGS · 7322 Foothill Blvd · Rock Springs, WY 82901 · P: 307-382-5507 · F: 307-382-5529

<https://harringtonco.com/>



STANDARD BLOCK



Standard Block
10x8x16 Natural
 HB10816

special order
Colors Available
 BUF, DKG, GEN,
 GRA, KAI, SAN, TER

Larger block for buildings and walls
 Pallet Quantity: 78
 Weight: 42



Standard Block
10x8x16 Natural
Bond Beam
 HB10816BB

Larger block for buildings and walls,
 Rebar placement knock-outs
 Pallet Quantity: 78
 Weight: 42



Standard Block
10x8x8 Natural
1/2 Block
 HB1088

Larger block for buildings and walls,
 single core
 Pallet Quantity: 144
 Weight: 26



Standard Block
12x8x8 Natural
1/2 Block
 HB1288

Larger block for buildings and walls,
 single core
 Pallet Quantity: 120
 Weight: 29



Standard Block
12x8x16 Natural
 HB12816

special order
Colors Available
 BUF, DKG, GEN,
 GRA, KAI, SAN, TER

Larger block for buildings and walls
 Pallet Quantity: 66
 Weight: 47



Standard Block
12x8x16 Natural
Bond Beam
 HB12816BB

Rebar placement knock-outs, Large
 Block for buildings & walls
 Pallet Quantity: 66
 Weight: 54



Standard Block
6x4x16 Natural
1/2 High
 HB6416HH

PALLETS
 1/3 of blocks have a
 window sash

For height needs on block when a
 full height block is too much.
 Pallet Quantity: 190
 Weight: 12



Standard Block
6x8x16 Natural
 HB6816

special order
Colors Available
 BUF, DKG, GEN,
 GRA, KAI, SAN, TER

Great for mobile home skirting
 & smaller projects
 Pallet Quantity: 114
 Weight: 29



Standard Block
6x8x8 Natural
1/2 Block
 HB688

Pallet Quantity: 252
 Weight: 14

Half block for squaring an end
 of run, Single Core

PALLETS
 all of blocks have
 a window sash



Window Sash



Standard Block
6x8x16 Natural
Bond Beam
 HB6816BB

Rebar placement knock-outs.
 Pallet Quantity: 114
 Weight: 29

STANDARD BLOCK



Standard Block
8x8x16 Natural
 HB8816

special order
Colors Available
 BUF, DKG, GEN,
 GRA, KAI, SAN, TER

Pallet Quantity: 90
 Weight: 33

*Our most Popular
 For buildings & structures*

PALLETS
 1/3 of blocks have a
 window sash



Standard Block
8x4x16 Natural
1/2 High
 HB8416HH

PALLETS
 1/3 of blocks have a
 window sash

*For buildings & structures, used
 when a full block is too high*

Pallet Quantity: 150
 Weight: 15

Bond Beam



Standard Block
8x8x16 Natural
 HB8816BB

special order
Colors Available
 BUF, DKG, GEN,
 GRA, KAI, SAN, TER

Pallet Quantity: 90
 Weight: 37

Rebar placement knock-outs



Standard Block
8x8x8 Natural
 HB888

PALLETS
 all the blocks have a
 window sash

special order
Colors Available
 BUF, DKG, GEN,
 GRA, KAI, SAN, TER

Pallet Quantity: 180
 Weight: 19

For buildings, Single Core



Splitface Block
8x8x16 Natural
 HB8816SF

special order
Colors Available
 BUF, DKG, GEN,
 GRA, KAI, SAN, TER

Pallet Quantity: 90
 Weight: 35

Rough textured on one side

PALLETS
 1/3 of blocks have a
 window sash



Splitface Corner Block
8x8x16 Natural
 HB8816SFCNR

special order
Colors Available
 BUF, DKG, GEN,
 GRA, KAI, SAN, TER

Pallet Quantity: 90
 Weight: 35

*Rough textured on one long
 & one short side*



Solid Block
8x8x16 Natural
 HB8816S

Pallet Quantity: 60
 Weight: 60

*Use for yard foundations, landscape,
 steps, & walls*



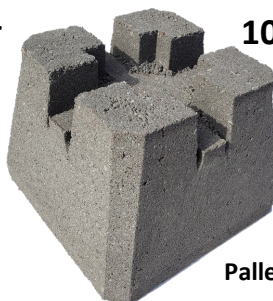
Solid Block
8x4x16 Natural
 HB8416S

special order
Colors Available
 BUF, DKG, GEN,
 GRA, KAI, SAN, TER

Pallet Quantity: 150
 Weight: 30

Fence caps, landscape, steps, & walls

*Deck supports. Designed to
 be used w/4"x4" posts.
 Perfect for deck & out
 building construction.
 Build fast & easy. No
 mixing or pouring of
 footings required.*



Dek Block
10.5x10.5x8
 HBDEK

Pallet Quantity: 80
 Weight: 42



Solid Block
6x4x16 Natural
 HB6416S

special order
Colors Available
 BUF, DKG, GEN,
 GRA, KAI, SAN, TER

Pallet Quantity: 152
 Weight: 23

Fencing caps, Landscaping

RAISED GARDENS *Ready to Assemble*

How does your garden grow?

Item	Size	Description
HBGARDEN44	4x4x16	4'L x 4'W x 16"H Block Raised Garden Natural
HBGARDEN46	4x6x16	4'L x 6'W x 16"H Block Raised Garden Natural
HBGARDEN85	8.5x5x16	8.5'L x 5'W x 16"H Block Raised Garden Natural
HBGARDEN88	8x8x16	8'L x 8'W x 16"H Block Raised Garden Natural



8.5" SIDES



5" SIDES

CORNER	1/2	FULL	1/2	H BLOCK	1/2	FULL	1/2
CORNER	FULL	FULL	FULL	FULL	CORNER	CORNER	CORNER

CORNER	1/2	FULL	FULL	1/2	CORNER
CORNER	FULL	FULL	FULL	FULL	CORNER



8.5' x 5' x 16"
HBGARDEN85



Add a splash of color

Available Colors: Natural, Buff, Dark Gray, Geneva Brown, Graphite, Kailua, Sangria, & Terra Cotta.

Raised Gardens are smooth block.

SPECIALITY/LANDSCAPING BLOCK



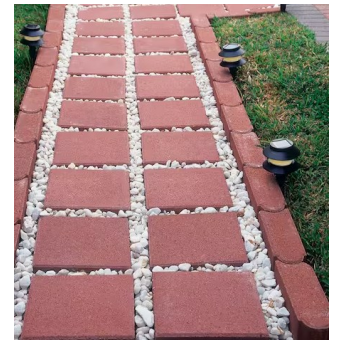
Square Patio Paver
12x12x1.5 Natural
 HB1212S

HB1212SRED Red
 HB1212STAN Tan

Pallet Quantity: 168
 Weight: 17

Refundable Pallet

Complete your
 pathway with some
Classic Edge
Blocks HBCE



Splitface Solid Block

6x2x16 Natural
 HB6216SF

Colors Available

BUF, DKG, GEN,
 GRA, KAI, SAN, TER

Pallet Quantity: 255
 Weight: 15

Rough textured on one side
Fence / Garden caps



Fencing caps, Pavers

Solid Block

8x2x16 Natural
 HB8216S

special order

Colors Available

BUF, DKG, GEN,
 GRA, KAI, SAN, TER

Pallet Quantity: 225
 Weight: 20

Retaining Wall 8 Classic

8x18x12

HB8WALL	Natural
HB8WALLBUF	Buff
HB8WALLGEN	Geneva Brown
HB8WALLKAI	Kailua
HB8WALLTER	Terra Cotta
HB8WALLSAN	Sangria
HB8WALLGRA	Graphite
HB8WALLDKG	Dark Gray

Pallet Quantity: 36
 Weight: 75

*One of the best retaining wall
 systems made*

Border Classic Edge

4x2.75x10

HBCE	Natural	HBCETER	Terra Cotta
HBCEBUF	Buff	HBCESAN	Sangria
HBCEGEN	Geneva Brown	HBCEGRA	Graphite
HBCEKAI	Kailua	HBCEDKG	Dark Gray

*Border & edge for creating almost
 any design*

Pallet Quantity: 200
 Weight: 9

Retaining Wall Universal Cap

4x18x10.5



HBUCAP	Natural	HBUCAPKAI	Kailua
HBUCAPBUF	Buff	HBUCAPTER	Terra Cotta
HBUCAPGEN	Geneva Brown	HBUCAPSAN	Sangria
		HBUCAPGRA	Graphite
		HBUCAPDKG	Dark Gray

Pallet Quantity: 54
 Weight: 54

*Finish the tops of Retaining
 Classic Walls*

Retaining Wall Cottage Stone

12x4x8.5



HBCS	Natural	HBCSTER	Terra Cotta
HBCSBUF	Buff	HBCSSAN	Sangria
HBCSGEN	Geneva Brown	HBCSGRA	Graphite
HBCSKAI	Kailua	HBCSDKG	Dark Gray

*Great for average walls, easy
 to install*

Pallet Quantity: 112
 Weight: 24

CHIMNEY BLOCK & PRODUCTS



Flue Tile Sizing Varies Slightly

Flue Tile
8x8x12
HBFLUE88

Vitrified clay flue liner. Used to line chimneys. Usually Terra Cotta Orange in color

Weight: 21



Chimney Block
16x8x16 8x8 Flue
HB16816CB

Heavy Duty block for chimney. Superb Quality

Pallet Quantity: 24
Weight: 96



Flue Tile
8x12x12
HBFLUE812

Vitrified clay flue liner. Used to line chimneys. Usually Terra Cotta Orange in color

Weight: 24



Chimney Block
16x8x21 8x12 Flue
HB16821CB

Heavy Duty block for chimney. Superb Quality

Pallet Quantity: 16
Weight: 107



Flue Tile
12x12x12
HBFLUE1212

Vitrified clay flue liner. Used to line chimneys. Usually Terra Cotta Orange in color

Weight: 30



Chimney Block
21x8x21 12x12 Flue
HB21821CB

Heavy Duty block for chimney. Superb Quality. 2pc construction.

Pallet Quantity: 25
Weight: 124



1/2 height of standard liners

Standard Block Cigar Liner
4x4x16 Natural
HB4416CIGAR

special order
Colors Available
BUF, DKG, GEN,
GRA, KAI, SAN, TER

Pallet Quantity: 300
Weight: 11



Generally used in chimney construction

Standard Block Liner
4x8x16 Natural
HB4816L

special order
Colors Available
BUF, DKG, GEN,
GRA, KAI, SAN, TER

Pallet Quantity: 150
Weight: 22

Pier Concrete Cap



SPECIAL ORDER
Ask about sizes

Finish off your fence or columns
Appx Weight: 45



6' Concrete Parking Bumper Block
6"h x 8"w x 6'l
HBBUMPER

Use to define parking area for cars to stop
Pallet Quantity: 12
Weight: 200



Fire Brick
4.5x9x1.25
HBFIRE1

Pallet Quantity: 912
Weight: 2

4.5x9x3
HBFIRE3

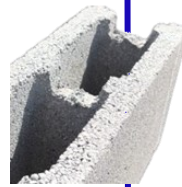
Used for fire boxes, wood burning stoves, knife forges
Pallet Quantity: 456
Weight: 4

FENCING BLOCK



Fence Block T&G
6x8x16 Natural
HB6816TG

Colors Available
BUF, DKG, GEN,
GRA, KAI, SAN, TER



Fence Block

Pallet Quantity: 114
Weight: 28

T&G Blocks have Bond Beam Knockout



Splitface Block T&G
6x8x16 Natural
HB6816TGSF

Colors Available
BUF, DKG, GEN,
GRA, KAI, SAN, TER

Rough textured
fence block

Pallet Quantity: 114
Weight: 29

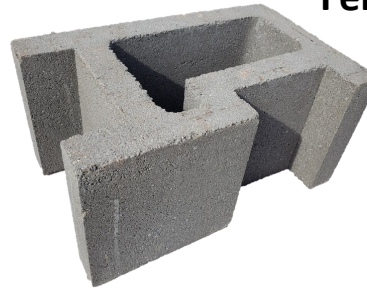


Fence Block A Post
10x8x16 Natural
HBPOSTA

Colors Available
BUF, DKG, GEN,
GRA, KAI, SAN, TER

Pallet Quantity: 78
Weight: 37

Column block for supporting fence



Fence Block Corner Post
10x8x16 Natural
HBPOSTCORN

Colors Available
BUF, DKG, GEN,
GRA, KAI, SAN, TER

Pallet Quantity: 78
Weight: 39

Column block for supporting fence



Fence Block H Post
10x8x16 Natural
HBPOSTH

Colors Available
BUF, DKG, GEN,
GRA, KAI, SAN, TER

Pallet Quantity: 78
Weight: 37

Column block for supporting fence

Seconds Block
HBSECONDS

Occasionally overruns, transition blocks,
& quality seconds may be available to purchase.

Styles & quantities vary.

Please inquire for current availability.

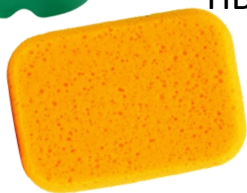
· SOLD AS IS · NO RETURNS ·

ACCESSORIES

We carry a full line of tools and trowels



Concrete Mortar Additive HBCMA
Available in 1 and 5 gallon containers.



Hydrophilic Sponge

HBSPONGE Highly absorbent cellulose, cleans easily.



Muriatic Acid
TV209221 gallon
TV209239 quart

Rebar 20'

3/8" REBAR38
1/2" REBAR12
5/8" REBAR58



Vinyl Weep Hole

3/8" x 4" HBWEEP

Provide an outlet for water drainage. (1000/box)



Brick Ties 7/8" x 7'

LKBRICKTIE

Used to attach brick to frame structure. (1000/box)



Grout Stop

For 6", 8", & 10" Block
Saves on mortar. Keeps mortar from interior of block.

4" HBGS4
6" HBGS6
8" HBGS8



Blocks available in the following colors:



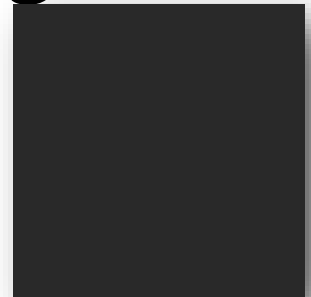
BUFF (BUF)



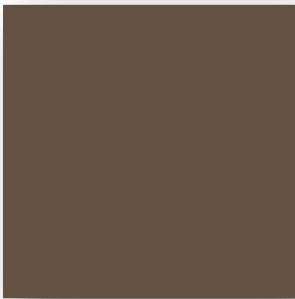
DARK GRAY (DKG)



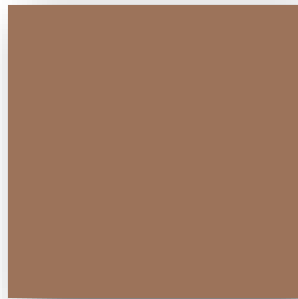
GENEVA BROWN (GEN)



GRAPHITE (GRA)



KAILUA (KAI)



SANGRIA (SAN)



TERRA COTTA (TER)



NATURAL

Meets ASTM C 90 Rating. Blocks are used extensively for both loadbearing and non-loadbearing walls, externally and internally. Blocks are uniform in color and texture and generally true uniform construction. A concrete block wall can be laid in less time and may cost up to half as much as a similar brick wall. Lightweight aggregate concrete blocks have good insulating properties against transfer of heat and cold. {Concrete} blocks are manufactured from {cement} and either dense or lightweight aggregates as solid, cellular, or hollow blocks.

A cellular block has one or more holes or cavities that do not pass through the block.

The thicker blocks are made with cavities or holes to reduce weight and drying shrinkage.

Information in this catalog is intended to give only general information about the product and its uses. Please refer specific questions on uses to qualified, licensed engineers, contractors, and government local and city inspectors.

