



**HARRINGTON  
& COMPANY**

# 2017 Block Catalog

**Richfield**  
Block Company



[www.harringtonco.com](http://www.harringtonco.com)

## SALT LAKE

760 West Layton Avenue • Salt Lake City, Utah 84104  
Phone (801) 972-3131 • Fax (801) 972-0663

## IDAHO FALLS

5578 Yellowstone Hwy Idaho Falls, ID 83401  
Phone 208-552-6622 Fax 208-552-1677



facebook.com/harringtonco  
twitter.com/harringtonco

## RICHFIELD

1595 South Airport Rd Richfield, UT 84701  
Phone 435-896-4071 Fax 435-896-4073

## ROCK SPRINGS

7322 Foothill Blvd Rock Springs, WY 82901  
Phone 307-382-5507 Fax 307-382-5529

## HYRUM

52 East Main Hyrum, UT 84319  
Phone 435-245-4554 Fax 435-245-7746

## STANDARD BLOCK



Standard Block  
**10x8x16 Natural**  
HB10816  
**10x8x16 Colored**  
HB10816C

*Larger block for building and walls,  
2 core*

Pallet Quantity: 78  
Weight: 42



Standard Block  
**10x8x16 Natural**  
**Bond Beam**  
HB10816BB

*Larger block for buildings and walls,  
Grooved for rebar placement, 2 core*

Pallet Quantity: 78  
Weight: 42



Standard Block  
**10x8x8 Natural**  
**Half Block**  
HB1088

*Larger block for building and walls*

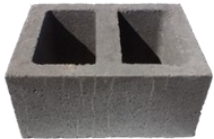
Pallet Quantity: 144  
Weight: 26



Standard Block  
**12x8x8 Natural**  
**Half Block**  
HB1288

*Larger block for buildings and walls,  
single core*

Pallet Quantity: 120  
Weight: 29



Standard Block  
**12x8x16 Natural**  
HB12816  
**12x8x16 Colored**  
HB12816C

*Larger block for building and walls*

Pallet Quantity: 66  
Weight: 47



Standard Block  
**12x8x16 Natural**  
**Bond Beam**  
HB12816BB

*Grooved for rebar placement*

Pallet Quantity: 66  
Weight: 54



Standard Block  
**6x4x16 Natural**  
**Half High**  
HB6416HH

*For height needs on block when a full height  
block is too high.*

Pallet Quantity: 190  
Weight: 12



Standard Block  
**6x8x16 Natural**  
HB6816

*Great for mobile home skirting & smaller projects*

Pallet Quantity: 114  
Weight: 25



Standard Block  
**6x8x8 Natural**  
**Half Block**  
HB688

*Half block for squaring our end of run.  
No need to cut standards in half.*

Pallet Quantity: 252  
Weight: 14



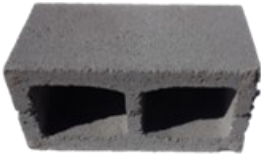
Standard Block  
**6x8x16 Natural**  
**Bond Beam**  
HB6816BB

*Grooved for rebar placement*

Pallet Quantity: 114  
Weight: 29



## STANDARD BLOCK



Standard Block  
**8x8x16 Natural**  
HB8816  
**8x8x16 Colored**  
HB8816C

*For Buildings & structures.  
Our most popular*

Pallet Quantity: 90  
Weight: 33



Standard Block  
**8x4x16 Natural  
Half High**  
HB8416HH

*For Buildings & structures, used  
when a full block is too high*

Pallet Quantity: 150  
Weight: 15



Standard Block  
**8x8x16 Natural  
Bond Beam**  
HB8816BB

*Grooved for rebar placement*

Pallet Quantity: 90  
Weight: 37



Standard Block  
**8x8x8 Natural**  
HB888  
**8x8x8 Colored**  
HB888C

*For Buildings*

Pallet Quantity: 180  
Weight: 19



Splitface Block  
**8x8x16 Natural**  
HB8816SF  
**8x8x16 Colored**  
HB8816SFC

*Rough Textured on one side*

Pallet Quantity: 90  
Weight: 34



Split Face Corner Block  
**8x8x16 Natural**  
HB8816SFCNR  
**8x8x16 Colored**  
HB8816SFCNRC

*Rough Textured on  
one long and one short side*

Pallet Quantity: 90  
Weight: 35



Solid Block  
**8x8x16 Natural**  
HB8816S

*Use for yard foundations, landscape,  
steps, & walls*

Pallet Quantity: 60  
Weight: 60



Solid Block T&G  
**8x4x16 Natural**  
HB8416S  
**8x4x16 Colored**  
HB8416SC

*Fence caps, landscape, steps, & walls*

Pallet Quantity: 150  
Weight: 28



Solid Block  
**8x2x16 Natural**  
HB8216S  
**8x2x16 Colors**  
HB8216SBUF Buff,

HB8216SDKG Dark Grey, HB8216SGEN Geneva Brown,  
HB8216SGRA Graphite, HB8216SKAI Kailua,  
HB8216SSAN Sangria, HB8216TER Terra Cotta

*Fencing caps, pavers*

Pallet Quantity: 225  
Weight: 20



Solid Block  
**6x4x16 Natural**  
HB6416S  
**6x4x16 Colored**  
HB6416SC

*Fencing caps, landscaping*

Pallet Quantity: 152  
Weight: 23

## RAISED GARDENS

*Ready to assemble*

### Block Raised Garden Natural

HBGARDEN 8.5'L x 5'W x 16"H

Weight 1290

#### Color

HBGARDENC 8.5'L x 5'W x 16"H

Weight 1290

26 Caps (Optional)



### Block Raised Garden Natural

HBGARDEN44 4'L x 4'W x 16"H

Weight 811

#### Color

HBGARDENC44 4'L x 4'W x 16"H

Weight 811

16 Caps (Optional)



### Block Raised Garden Natural

HBGARDEN46 4'L x 6'W x 16"H

Weight 914

#### Color

HBGARDENC46 4'L x 6'W x 16"H

Weight 914

18 Caps (Optional)



### Block Raised Garden Natural

HBGARDEN88 8'L x 8'W x 16"H

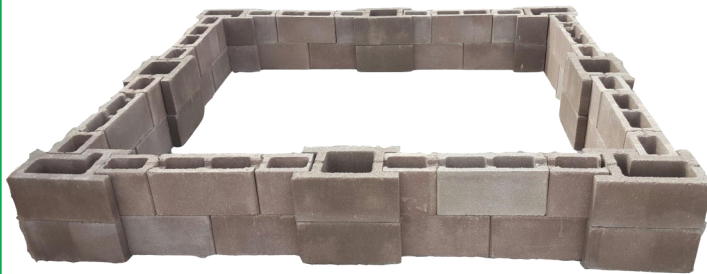
Weight 1550

#### Color

HBGARDENC88 8'L x 8'W x 16"H

Weight 1550

32 Caps (Optional)



*Available colors are Natural, Buff, Sangria, Geneva Brown, Terra Cotta, Dark Gray, & Graphite.*

*All raised gardens are smooth regular block. Split face block may be available. Additional charges would apply.*

## BLOCK PROJECTS

### Planter

6 Tier

HBPLANT



*Great for patio and Herb gardens.*

Weight: 203

### Rocket Stove

HBROCKET



*Easy to assemble.  
Great for camping  
and emergency.*

Pallet Quantity: 4  
Weight: 76



Raised Split Face Caps

**6x2x16 Natural**

HB6216SFCAP

#### Color

HB6216SFCCAP

Weight: 15



## SPECIALTY/LANDSCAPE BLOCK



### Concrete Cap

Various sizes available  
HBCCAP

*Finish off your fence or columns with this smooth concrete cap.*

### Concrete Parking Bumper Block 6'

**9x5x6'**

HBBUMPER



*Use to define parking area for car to stop.*

Weight: 200



Solid Block Split Faced

**6x2x16 Natural**

HB6216SF

Solid Block Split Faced

**6x2x16 Colored**

HB6216SFC

*Rough textured on one side, Fence caps*

Pallet Quantity: 225  
Weight: 15



**Dek Block**

**10.5x10.5x8**

HBDEK

*Deck supports. Designed to be used with 4x4 inch posts. Perfect for deck and outbuilding construction. Build fast and easy. No mixing or pouring of footings required.*

Pallet Quantity: 80  
Weight: 42



Retaining Wall 8 Classic

**8x18x12**

HB8WALL

**Natural**

HB8WALLBUF

**Buff**

HB8WALLDKG

**Dark Gray**

HB8WALLGEN

**Geneva Brown**

Pallet Quantity: 36  
Weight: 72

HB8WALLGRA **Graphite**

HB8WALLKAI **Kailua**

HB8WALLSAN **Sangria**

HB8WALLTER **Terra Cotta**

*One of the best retaining wall systems made*



Border Classic Edge

**4x2.5x10**

HBCE

**Natural**

HBCEBUF

**Buff**

HBCEDKG

**Dark Gray**

HBCEGEN

**Geneva Brown**

Pallet Quantity: 225  
Weight: 9.2

HBCEGRA **Graphite**

HBCEKAI **Kailua**

HBCESAN **Sangria**

HBCETER **Terra Cotta**

*Border and edge for creating almost any design*



Retaining Wall Universal Cap

**4x18x10.5**

HBUCAP

**Natural**

HBUCAPBUF

**Buff**

HB8UCAPDKG

**Dark Gray**

HBUCAPGEN

**Geneva Brown**

Pallet Quantity: 54  
Weight: 49

HB8UCAPGRA **Graphite**

HBUCAPKAI **Kailua**

HB8UCAPSAN **Sangria**

HB8UCAPTER **Terra Cotta**

*Finish the tops of retaining Classic retaining walls*



Retaining Wall Cottage Stone

**12x4x8.5**

HBSC

**Natural**

HBSCBUF

**Buff**

HBSCDKG

**Dark Gray**

HBSCGEN

**Geneva Brown**

Pallet Quantity: 112  
Weight: 24

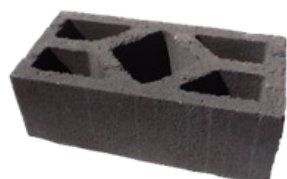
HBSCGRA **Graphite**

HBSCKAI **Kailua**

HBCSSAN **Sangria**

HBCSTER **Terra Cotta**

*Great for average walls, easy to install*



Fence Block Diamond Cap

**6x8x16 Natural**

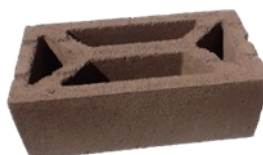
HB6816DCAP

**6x8x16 Natural**

HB6816DCAPC

*Decorative caps for fencing*

Pallet Quantity: 114  
Weight: 26



Fence Block Y Cap

**6x8x16 Natural**

HB6816YCAP

**6x8x16 Colored**

HB6816YCAPC

*Decorative caps for fencing*

Pallet Quantity: 114  
Weight: 28

## CHIMNEY BLOCK & PRODUCTS



Flue Tile  
**8x8x12**  
HBFLUE88

*Vitrified clay flue liner. Used to line chimneys.  
Usually terra cotta orange in color.*

Pallet Quantity: 96  
Weight: 21



Chimney Block  
**16x8x16 8x8 Flue**  
HB16816CB

*Heavy Duty block for chimney, superb quality*

Pallet Quantity: 24  
Weight: 96



Flue Tile  
**8x12x12**  
HBFLUE812

*Vitrified clay flue liner. Used to line chimneys.  
Usually terra cotta orange in color.*

Pallet Quantity: 72  
Weight: 24



Chimney Block  
**16x8x21 8x12 Flue**  
HB16821CB

*Heavy Duty block for chimney, superb quality*

Pallet Quantity: 16  
Weight: 107



Flue Tile  
**12x12x12**  
HBFLUE1212

*Vitrified clay flue liner. Used to line chimneys.  
Usually terra cotta orange in color.*

Pallet Quantity: 48  
Weight: 30



Chimney Block  
**21x8x21 12x12 Flue**  
HB21821CB

*Heavy Duty block for chimney, superb quality  
Two-piece construction*

Pallet Quantity: 25  
Weight: 124



Standard Block Cigar Liner  
**4x4x16 Natural**  
HB4416CIGAR

*Half height of standard liners*

Pallet Quantity: 300  
Weight: 11



Standard Block Liner  
**4x8x16 Natural**  
HB4816L  
**4x8x16 Colored**  
HB4816LC

*Generally used in chimney construction*

Pallet Quantity: 150  
Weight: 21



**Currently stocking Mortar Mix, Concrete Mix,  
Lime, Portland Cement, Paver Sand and more.**



Fire Brick  
**4.5x9x1.25**  
HBFIRE1  
**4.5x9x3**  
HBFIRE3

Pallet: 912/456  
Weight: 2/3



## FENCING BLOCK



Fence Block T&G  
**6x8x16 Natural**  
 HB6816TG  
**6x8x16 Colored**  
 HB6816TGC

*Fence Block*

Pallet Quantity: 114  
 Weight: 25



Split ace Block T&G  
**6x8x16 Natural**  
 HB6816TGSF  
**6x8x16 Colored**  
 HB6816TGSFC

*For rough textured fencing*

Pallet Quantity: 114  
 Weight: 29



Fence Block A Post  
**10x8x16 Natural**  
 HBPOSTA  
**10x8x16 Colored**  
 HBPOSTAC

*Column Block for supporting fence*

Pallet Quantity: 78  
 Weight: 35



Fence Block Corner Post  
**10x8x16 Natural**  
 HBPOSTCORN  
**10x8x16 Colored**  
 HBPOSTCORNC

*Column Block for supporting fence*

Pallet Quantity: 78  
 Weight: 39



Fence Block H Post  
**10x8x16 Natural**  
 HBPOSTH  
**10x8x16 Colored**  
 HBPOSTHC

*Column Block for supporting fence*

Pallet Quantity: 78  
 Weight: 37

HBWASH

### Wash Out Block

*Occasionally transition block is available. It varies in product selection and color. Great for jobs that are Hidden or are going to be painted.*

HBSECONDS

### Seconds Block

*Occasionally overruns and quality seconds may be available to purchase. Styles and quantities vary. Please inquire for current availability.*

## ACCESSORIES



### Hydrophilic Sponge

HBSPONGE  
*Highly absorbent cellulose,  
 cleans easily*

### Spacing Tape

KTBL518



### Grout Stop

4" HBGS4  
 6" HBGS6  
 8" HBGS8  
*Saves on mortar.  
 Keeps mortar from  
 interior of block.*

*For 6", 8", 10" Block*



### Brick Tongs

GKG11280  
*Designed for long  
 wear to carry  
 multiple bricks*

***We carry a full line of  
 tools and trowels.***



### Brick Ties 7/8" x 7' 1000 Box

LKBRICKTIE  
*Used to attach brick to frame  
 structure*



### Rebar

3/8" x 20' REBAR38  
 1/2" x 20' REBAR12



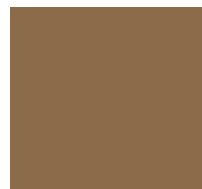
Blocks available in the following colors:



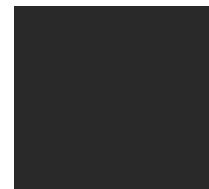
Buff



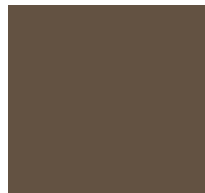
Dark Gray



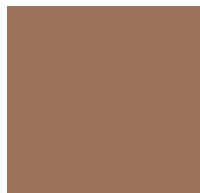
Geneva Brown



Graphite



Kailua



Sangria



Terra Cotta



Natural

*Meets ASTM C 90 Rating. Blocks are used extensively for both loadbearing and non-loadbearing walls, externally and internally. Blocks are uniform in color and texture and generally true uniform construction. A concrete block wall can be laid in less time and may cost up to half as much as a similar brick wall. Lightweight aggregate concrete blocks have good insulating properties against transfer of heat and cold. {Concrete} blocks are manufactured from {cement} and either dense or lightweight aggregates as solid, cellular, or hollow blocks. A cellular block has one or more holes or cavities that do not pass through the block. The thicker blocks are made with cavities or holes to reduce weight and drying shrinkage.*

*Information in this catalog is intended to give only general information about the product and its uses. Please refer specific questions on uses to qualified, licensed engineers, contractors, and government local and city inspectors.*