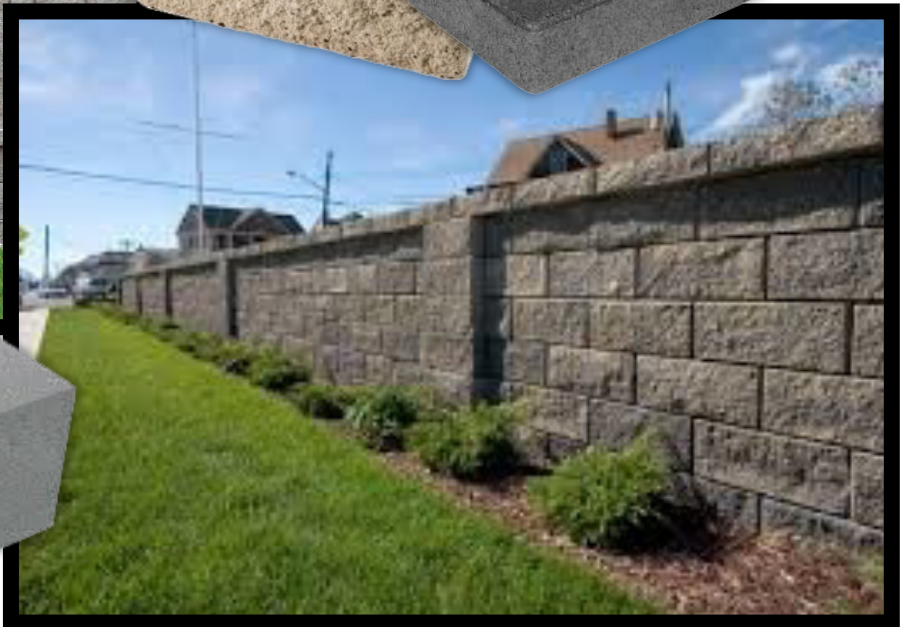




# 2016 Block Catalog

## Richfield Block Company



### RICHFIELD

1595 South Airport Rd Richfield, UT 84701  
Phone 435-896-4071 Fax 435-896-4073

### SALT LAKE

760 West Layton Avenue • Salt Lake City, Utah 84104  
Phone (801) 972-3131 • Fax (801) 972-0663  
Phone Toll Free - Utah 1-800-662-8639 • Out of State 1-800-892-8836  
www.harringtonco.com



### IDAHO FALLS

5578 Yellowstone Hwy Idaho Falls, ID 83401  
Phone 208-552-6622 Fax 208-552-1677

### HYRUM

52 East Main Hyrum, UT 84319  
Phone/Fax 435-245-4554

### ROCK SPRINGS

7322 Foothill Blvd Rock Springs, WY 82901  
Phone 307-382-5507 Fax 307-382-5529



## STANDARD BLOCK



Standard Block  
**10x8x16 Natural**  
HB10816  
Standard Block  
**10x8x16 Colored**  
HB10816C

*Larger block for building and walls, 2 core*

Pallet Quantity: 78  
Weight: 37



Standard Block  
**10x8x16 Bond Beam**  
HB10816BB

*Larger block for buildings and walls,  
Grooved for rebar placement, 2 core*

Pallet Quantity: 78  
Weight: 37



Standard Block  
**10x8x8 Half Block**  
HB1088

*Larger block for building and walls*

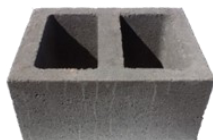
Pallet Quantity: 144  
Weight: 20



Standard Block  
**12x8x8 Half Block**  
HB1288

*Larger block for buildings and walls,  
single core*

Pallet Quantity: 120  
Weight: 31



Standard Block **12x8x16**  
HB12816  
Standard Block **12x8x16 Colored**  
HB12816C  
Standard Block **12x8x16**  
HB12816S

*Larger block for building and walls*

Pallet Quantity: 60  
Weight: 46



Standard Block  
**12x8x16 Bond Beam**  
HB12816BB

*Grooved for rebar placement*

Pallet Quantity: 60  
Weight: 46



Standard Block  
**6x4x16 Half High**  
HB6416HH

*For height needs on block when a full height block  
is too high.*

Pallet Quantity: 190  
Weight: 12



Standard Block  
**6x8x16**  
HB6816

*Great for mobile home skirting & smaller projects*

Pallet Quantity: 114  
Weight: 22



Standard Block  
**6x8x8 Half Block**  
HB688

*For buildings*

Pallet Quantity: 252  
Weight: 14



Standard Block  
**6x8x16 Bond Beam**  
HB6816BB

*Grooved for rebar placement*

Pallet Quantity: 114  
Weight: 27



## STANDARD BLOCK



Standard Block  
**8x8x16 Standard**  
HB8816  
Standard Block  
**8x8x16 Colored**  
HB8816C

*For buildings & structures,  
our most popular*

Pallet Quantity: 90  
Weight: 31



Standard Block  
**8x4x16 Half High**  
HB8416HH

*For Buildings & structures, used  
when a full block is too high*

Pallet Quantity: 150  
Weight: 15



Standard Block  
**8x8x16 Bond Beam**  
HB8816BB

*Grooved for rebar placement*

Pallet Quantity: 90  
Weight: 31



Standard Block  
**8x8x8 Standard**  
HB888  
Standard Block  
**8x8x8 Colored**  
HB888C

*For buildings*

Pallet Quantity: 180  
Weight: 16



Splitface Block  
**8x8x16 Natural**  
HB816SF  
Splitface Block  
**8x8x16 Colored**  
HB816SFC

*Rough Textured on one side*

Pallet Quantity: 90



Splitface Block  
**8x8x16 Corner**  
HB8816SFCNR  
Splitface Block  
**8x8x16 Corner Colored**  
HB8816SFCNRC

*Rough Textured on one long  
and one short side*

Pallet Quantity: 90  
Weight: 35

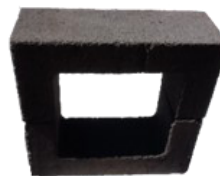
## CHIMNEY BLOCK



Chimney Block  
**16x8x16 8x8 Flue**  
HB16816CB  
Chimney Block  
**16x8x21 8x12 Flue**  
HB16821CB

*Heavy Duty block for  
chimney, superb quality*

Pallet Quantity: 24/16  
Weight: 100/112



Chimney Block  
**21x8x21 12x12 Flue**  
HB21821CB

*Heavy Duty block for chimney, superb quality  
Two-piece construction*

Pallet Quantity: 25  
Weight: 112



Standard Block  
**4x4x16 Cigar (liner)**  
HB4416CIGAR

*Half height of standard liners*

Pallet Quantity: 300  
Weight: 9

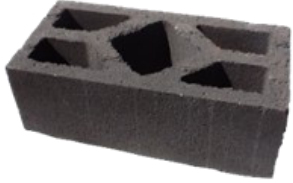


Standard Block  
**4x8x16 Liner**  
HB4816L  
Standard Block  
**4x8x16 Liner Colored**  
HB4816LC

*Generally used in  
chimney construction*

Pallet Quantity: 150  
Weight: 18

## FENCING BLOCK



Fence Block Natural  
**6x8x16 Diamond Cap**  
 HB6816DCAP  
 Fence Block Colored  
**6x8x16 Diamond Cap**  
 HB6816DCAPC

*Decorative caps for fencing*

Pallet Quantity: 120  
 Weight: 24



Fence Block  
**6x8x16 Y Cap Natural**  
 HB6816YCAP  
 Fence Block  
**6x8x16 Y Cap Colored**  
 HB6816YCAPC

*Decorative caps for fencing*

Pallet Quantity: 120  
 Weight: 25



Fence Block  
**6x8x16 T&G Natural**  
 HB6816TG  
 Fence Block  
**6x8x16 T&G Colored**  
 HB6816TGC

*Fence Block*

Pallet Quantity: 114  
 Weight: 25



Splitface Block  
**6x8x16 T&G Natural**  
 HB6816TGSF  
 Splitface Block  
**6x8x16 T&G Colored**  
 HB6816TGSFC

*For rough textured fencing*

Pallet Quantity: 114  
 Weight: 28



Solid Block  
**8x4x16 T&G Natural**  
 HB8416S  
 Solid Block  
**8x4x16 T&G Colored**  
 HB8416SC

*Fence Caps*

Pallet Quantity: 150  
 Weight: 23



Solid Block  
**8x2x16 T&G Natural**  
 HB8216SF  
 Solid Block  
**8x2x16 T&G Colored**  
 HB8216SFC

*Rough textured on one side,  
 Fence Caps*

Pallet Quantity: 225  
 Weight: 15



Fence Block  
**10x8x16 Post A Natural**  
 HBPOSTA  
 Fence Block  
**10x8x16 Post A Colored**

HBPOSTAC

*Column Block for supporting fence*

Pallet Quantity: 78  
 Weight: 32



Fence Block  
**10x8x16 Post Corner Natural**  
 HB8416S  
 Fence Block  
**10x8x16 Post Corner Colored**

HB8416SC

*Column Block for supporting fence*

Pallet Quantity: 78  
 Weight: 33



Fence Block  
**10x8x16 Post H Natural**  
 HBPOSTH  
 Fence Block  
**10x8x16 Post H Colored**  
 HBPOSTHC

*Column Block for supporting fence*

Pallet Quantity: 78  
 Weight: 32



Solid Block  
**8x8x16 Natural**  
 HB8816S

*Use for yard foundations, landscape, steps, & walls*

Pallet Quantity: 60  
 Weight: 65

## FENCING BLOCK



Solid Block  
**6x4x16 Natural**  
 HB6816  
 Solid Block  
**6x4x16 Colored**  
 HB6416SC

*Fencing caps, landscaping*

Pallet Quantity: 152  
 Weight: 19



Solid Block  
**8x2x16 Natural**  
 HB8216S  
 Solid Block  
**8x2x16 Colored**  
 HB8216SC

*Fencing caps, pavers*

Pallet Quantity: 225  
 Weight: 16

## SPECIALTY/LANDSCAPE BLOCK



Border Classic Edge  
**4"x2.5"x10" Natural**  
 HBCE  
 Border Classic Edge  
**4"x2.5"x10" Colored**  
 HBCEC

*Border and edge for creating almost any design*

Pallet Quantity: 200  
 Weight: 8

HBWASH **Wash Out Block**

*Occasionally transition block is available. It varies in product selection and color. Great for jobs that are hidden or are going to be painted.*

HBSECONDS **Seconds Block**

*Occasionally overruns and quality seconds may be available to purchase. Styles and quantities vary. Please inquire for current availability.*



Retaining Wall **8 Classic 8x18x12**  
 HB8WALL **Natural**  
 HB8WALLBUF **Buff**  
 HB8WALLB860 **Black #860**  
 HB8WALLGEN **Geneva**  
 HB8WALLBLA **Black #8084**  
 HB8WALLKAH **Kahlua**

Pallet Quantity: 36  
 Weight: 70

HB8WALLTER **Terra Cotta** HB8WALLSAN **Sangria**  
*One of the best retaining wall systems made*



**Dek Block**  
**10.5"x10.5"x8"**  
 HBDEK

*Deck supports. Designed to be used with 4x4 inch posts. Perfect for deck and out-building construction. Build fast and easy. No mixing or pouring of footings required.*

Pallet Quantity: 80  
 Weight: 40



Retaining Wall Universal Cap  
**4x18x10.5**  
 HBUCAP **Natural**  
 HBUCAPBUF **Buff**  
 HB8UCAPB860 **Black #860**  
 HBUCAPGEN **Geneva**

Pallet Quantity: 54  
 Weight: 52

HB8UCAPBLA **Black #8084** HBUCAPKAH **Kahlua**  
 HB8UCAPTER **Terra Cotta** HB8UCAPSAN **Sangria**  
*Finish the tops of retaining Classic retaining walls*



Retaining Wall Cottage Stone  
**12x4x8.5**  
 HBSC **Natural**  
 HBSCBUF **Buff**  
 HBSCB860 **Black #860**  
 HBSCGEN **Geneva**

Pallet Quantity: 112  
 Weight: 22

HBCSBLA **Black #8084** HBCSKAH **Kahlua**  
 HBCSTER **Terra Cotta** HBCSSAN **Sangria**  
*Great for average walls, easy to install*

**H Block Raised Garden Natural**

HBGARDEN **8.5'L x 5'W x 16"H**  
 Weight 1092

HBGARDEN44 **4'L x 4'W x 16"H**  
 Weight 768

HBGARDEN46 **4'L x 6'W x 16"H**  
 Weight 896

HBGARDEN88 **8'L x 8'W x 16"H**  
 Weight 1408



Raised Gardens



*Ready to assemble*

**H Block Raised Garden Color**

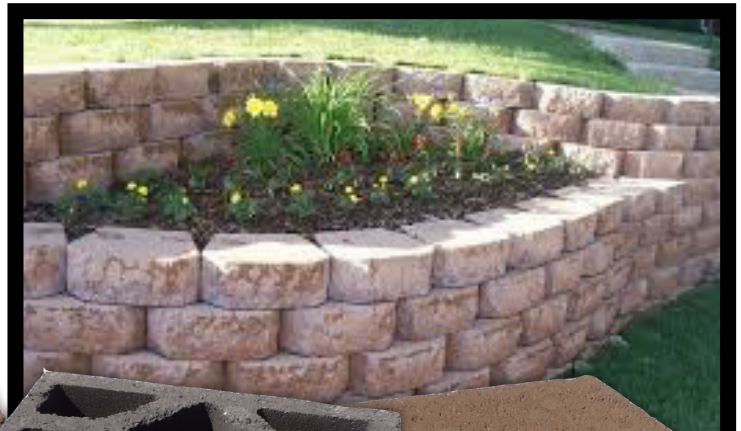
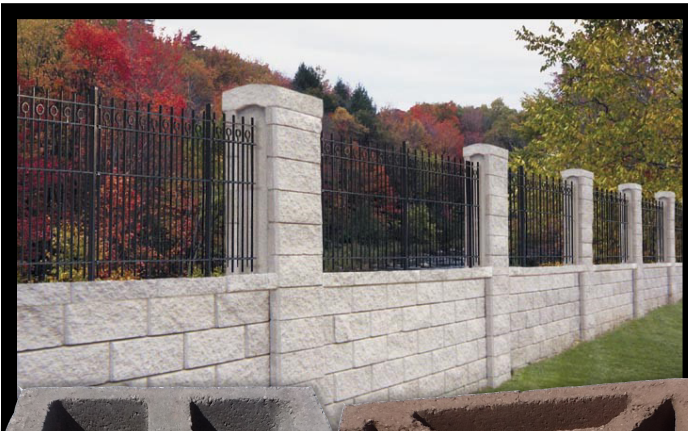
HBGARDENC **8.5'L x 5'W x 16"H**  
 Weight 1092

HBGARDENC44 **4'L x 4'W x 16"H**  
 Weight 768

HBGARDENC46 **4'L x 6'W x 16"H**  
 Weight 896

HBGARDENC88 **8'L x 8'W x 16"H**  
 Weight 1408





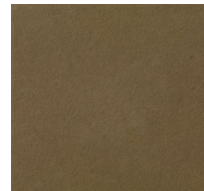
Blocks available in the following colors:



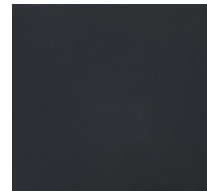
Buff



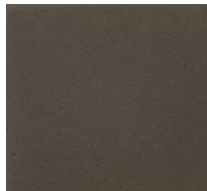
Dark Gray



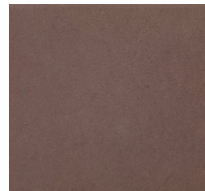
Geneva Brown



Graphite



Kailua



Sangria



Terra Cotta



Natural

*Meets ASTM C 90 Rating. Blocks are used extensively for both loadbearing and non-loadbearing walls, externally and internally. Blocks are uniform in color and texture and generally true uniform construction. A concrete block wall can be laid in less time and may cost up to half as much as a similar brick wall. Lightweight aggregate concrete blocks have good insulating properties against transfer of heat and cold. {Concrete} blocks are manufactured from {cement} and either dense or lightweight aggregates as solid, cellular, or hollow blocks. A cellular block has one or more holes or cavities that do not pass through the block. The thicker blocks are made with cavities or holes to reduce weight and drying shrinkage.*

*Information in this catalog is intended to give only general information about the product and its uses. Please refer specific questions on uses to qualified, licensed engineers, contractors, and government local and city inspectors.*